

Μιχαλακοπούλου 184 & Ραψάνης,

Αθήνα

Office to let



ACCESSIBILITY

800m walking distance from the metro station “Ampelokipoi” and 100m from multiple bus lines.

Close to Attiki Odos exit “Katechaki”.



PROPERTY NOTES

- ☐ Built in 2007 and renovated in 2014
- ☐ Suspended ceiling
- ☐ All floors have kitchenette, WC, and computer rooms
- ☐ LED Lighting
- ☐ Power Generator
- ☐ 2 passenger elevators
- ☐ Disable access
- ☐ HVAC VRV



HIGHLIGHTS

Location, Natural Light, Accessibility, Parking, Amenities



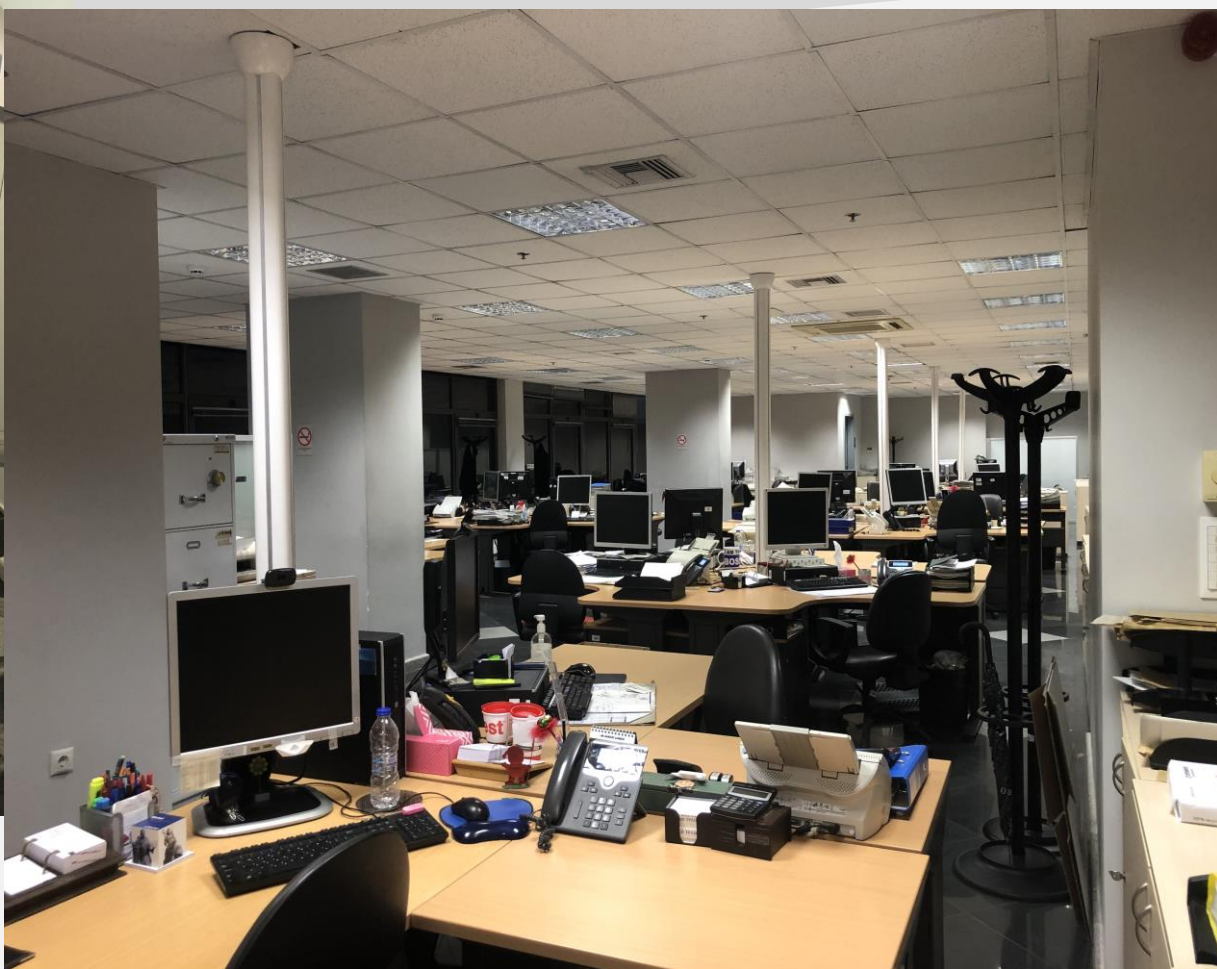
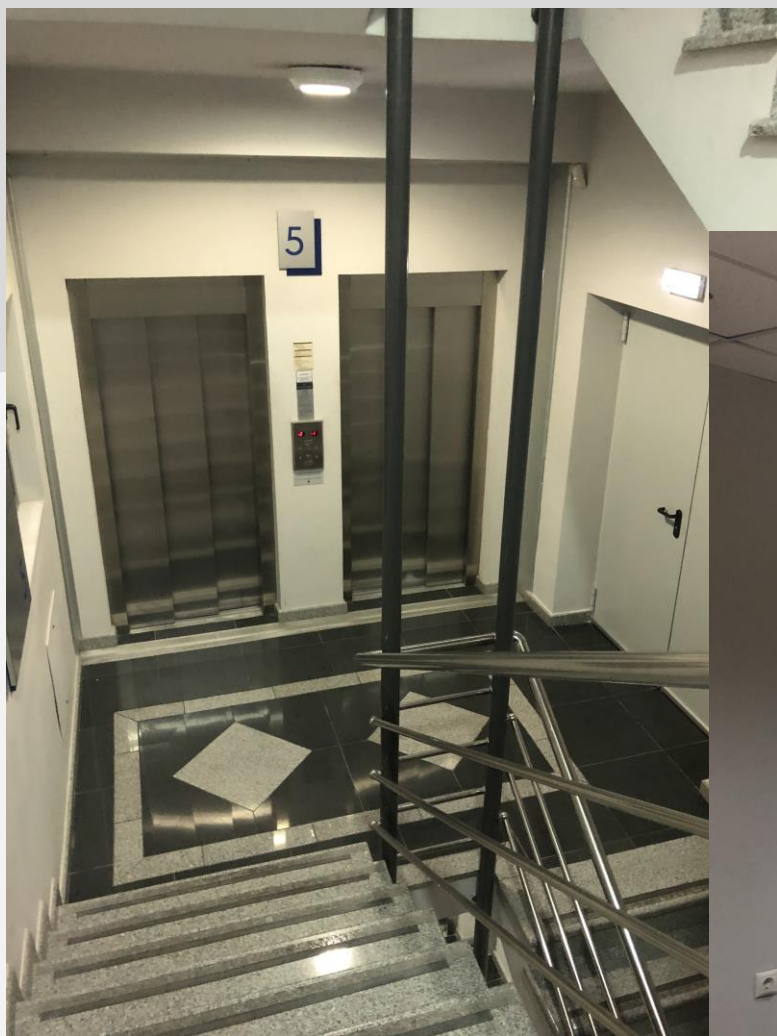
AVAILABILITY

January 2025

PROPERTY SUMMARY

Property Type	Office Building
Address	184 Michalakopoulou, Athens
Lettable Area	GBA 8,936 sqm GLA 5,749 sqm (4,458 sqm above ground/main use)
Level	4 basements and 7 floors above ground
Location Ranking	Very Good
Condition	Very Good
Close by Amenities	Restaurants, Cafes, Supermarket, Bakeries, Pharmacies, Gym, Dry cleaning
Parking Slots	75 underground
Ancillary Spaces	5 storage rooms on basements
Fire Protection	Sprinklers and fire detection system

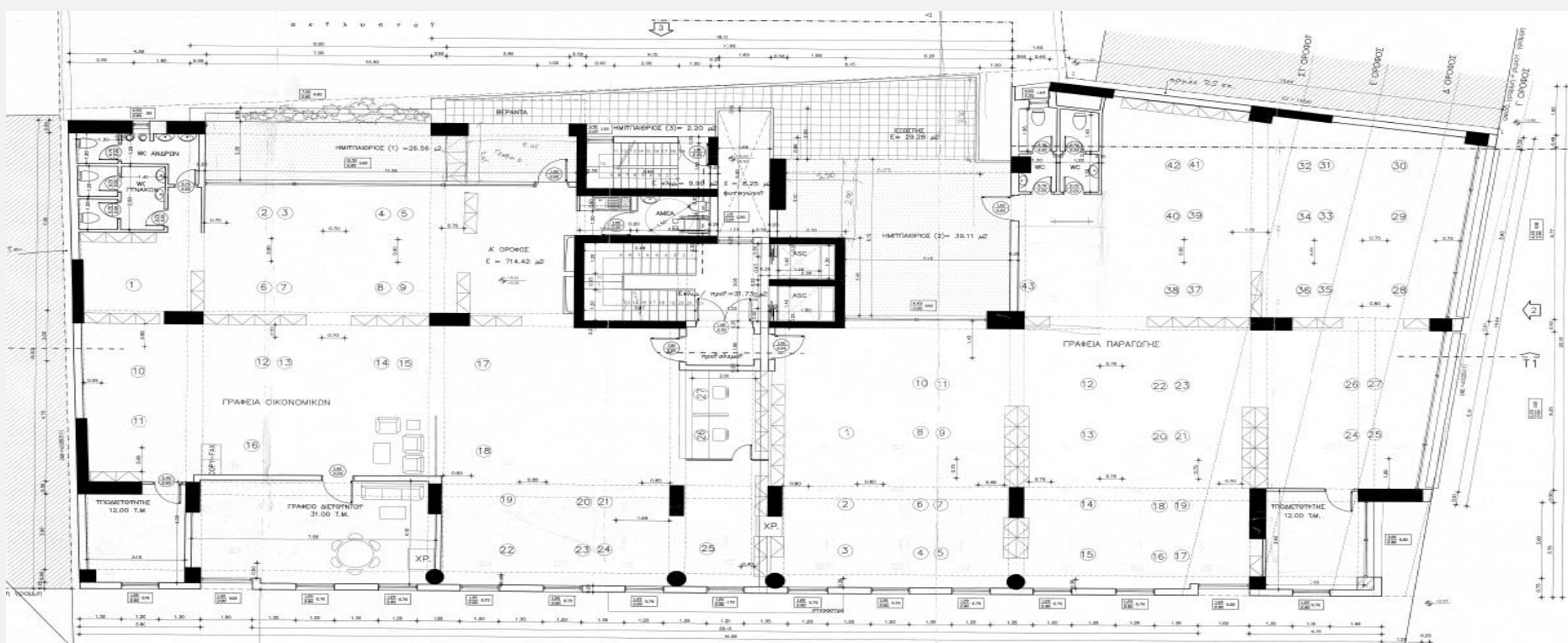
Μιχαλακοπούλου 184 & Ραψάνης,
Αθήνα
Office to let



Μιχαλακοπούλου 184 & Ραψάνης,
Αθήνα
Office to let

Area	sqm
4th Basement	504.04
3rd Basement	312.46
2nd Basement	312.46
1st Basement	96.21
Ground Floor	553.23
1st Floor	738.46
2nd Floor	738.46
3rd Floor	696.69
4th Floor	675.78
5th Floor	583.45
6th Floor	537.42
Total	5,748.66
GBA	8,936.43

FLOORPLAN (1st FLOOR)



FLOORPLAN (3rd FLOOR)

